

# Manual of New Photoelectric Beam Sensor



- ⊙Retro-Reflective Type   ⊙Through Beam Type   ⊙Diffused Reflection Type
- ⊙Input Volt.: AC/DC 12-250V (Full Range-Universal)

## Features

- Sensing range adjustable potentiometer available
- Response time adjustable potentiometer available
- PC casing, anti fog / dew / rains
- IP-66 Water Proof
- Square / Round Shape reflector selectable
- Wrap around mounting bracket
- Input Volt.: Full range (AC / DC 12~250V)
- 2 Led indicators for power and beam alignment
- Hood for round / square shape reflector (Optional)
- External water proof housing (optional)

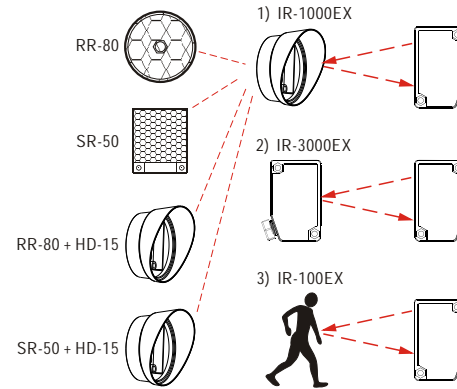
## Applications

- Gate opener
- Overhead door
- Swing gate
- Sliding door
- Internal / External protection
- Window
- Terrace
- Warehouse
- Parking lot
- Conveyor

## Specifications

Detection Method		Retro-Reflection	Through Beam	Diffused Reflection
Item No.	N.C.	IR-1000ExL	IR-3000ExL	IR-100ExL
	N.O.	IR-1000ExD	IR-3000ExD	IR-100ExD
Sensing Range		10 meters	30 meters	1 meter
Supply Volt.		AC / DC 12-250V ±10%		
Response Time		5-100 msec. (Adjustable)		
Sensing Range (adjustable)		0.2m-10m (adjustable)	0.2m-30m (adjustable)	0.2m-1m (adjustable)
Emitting Element		IR LED		
Beam Alignment		Red Led Indicator (when powered)		
Led Indicator	Beam Alignment	N.C.: On	N.O.: Off	
	Beam Broken	N.C.: Off	N.O.: On	
Power Led Indicator	Red Led Indicator			
	When Powered: Red Led On	Power Off: Red Led Off		
Dimensions		20mm(w) × 63mm(h) × 39mm(d)		
Current Drain		50mA (±10%)		
Output Method	1. SPDT Relay output		2. Transistor output	
	IR-XXXXExL or ExD		IR-XXXXExLT or IR-XXXXExDT	
Switching Capacity		1A / 250VAC , 2A / 30VDC		
Illumination		Lamp light <10,000 Lux ; Sunlight <30,000 Lux		
Connection Method		Cable wires: Brown / Blue / White / Black / Gray		
Noise Resistance		1500Vp-P / 1 Us		
Housing Material		Case: PC ; Lens: PC		
Operating Temp.		-4°F to 131°F (-20°C to 55°C)		
Water Proof		IP-66		
Safety Standard		CE / RoHS (Up to customer's request)		

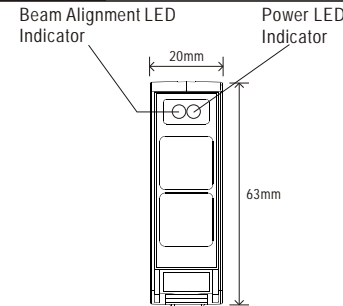
## Collections



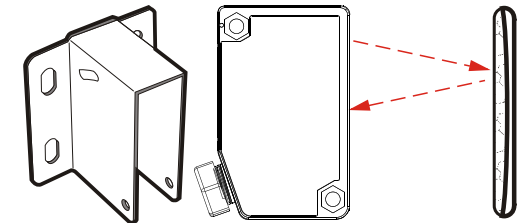
## Accessories for IR-1000ExL / IR-1000ExD

1. RR-80	2. SR-50	3. HD-15	4. MB-1000
1. RR-80: Round shape reflector / Diameter: 80mm 2. SR-50: Square shape reflector ; 50 × 50mm 3. HD-15: Water / Dust Proof Hood for either round or square reflector 4. MB-1000: Wrap around mounting bracket			

## Front View



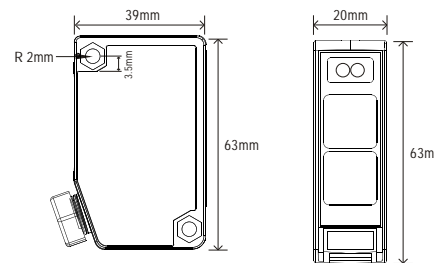
## Side View



(Sensor / Reflector / Mounting Bracket)

Cable wire length: 2 meters

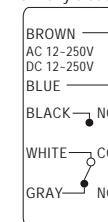
## Dimensions



## Wiring Connection Diagram

### DARK ON (N.O.)--ExD Series

- Brown: Input power-non polarity
- Blue: Input power-non polarity
- Black: Normally open
- White: Common
- Gray: Normally close



### LIGHT ON (N.C.)--ExL Series

- Brown: Input power-non polarity
- Blue: Input power-non polarity
- Gray: Normally close
- White: Common
- Black: Normally open

